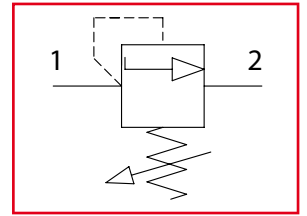




# VMD1

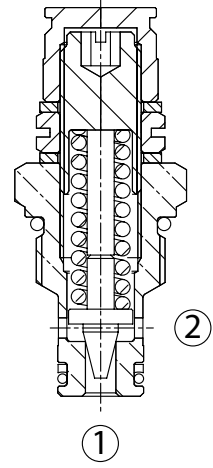
Valvole di massima pressione  
Relief valves



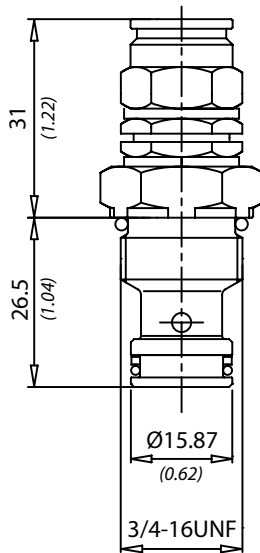
**LEHENGOK, S.p.A.**



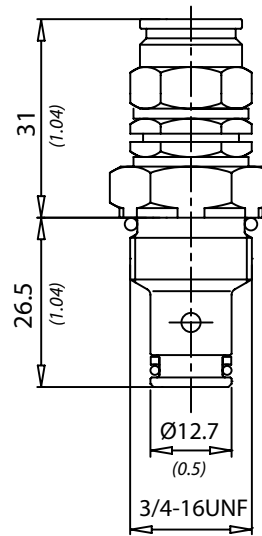
Dati tecnici Technical data	
Viscosità fluido Fluid viscosity	10-500 mm <sup>2</sup> /s 45 to 2000 ssu (6 to 420 cSt)
Classe di contaminazione Filtration	ISO code 16/13 SAE class 4 or better
Temperatura fluido Fluid temperature	-20°C +80°C -4°F +176°F
Temperatura ambiente Ambient temperature	-20°C +50°C -4°F +122°F



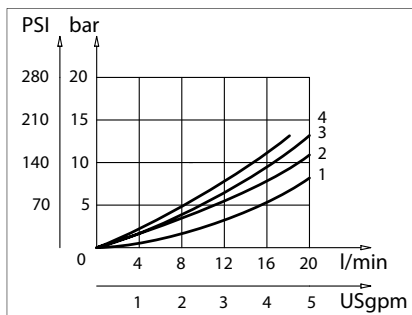
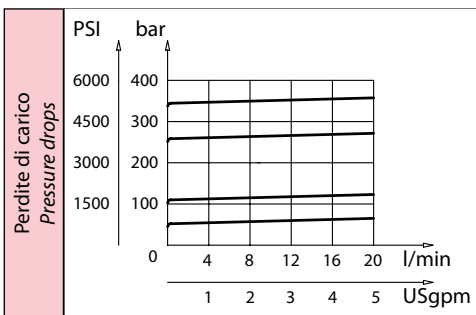
15



12



[ mm  
(Inches) ]



Codice ordinazione Ordering code			
<b>VMD1 - X - Y - K</b>			
<b>X</b>	Regolazione / Setting	<b>Y</b>	Molla - Spring
<b>C</b>		<b>1</b>	<b>40 bar (600 PSI) max</b>
		<b>2</b>	<b>110 bar (1600 PSI) max</b>
		<b>3</b>	<b>250 bar (3600 PSI) max</b>
		<b>4</b>	<b>350 bar (5000 PSI) max</b>
<b>K</b>	Dimensione / Size		
<b>12</b>	<b>Ø 12,7</b>		
<b>15</b>	<b>Ø 15,87</b>		

Caratteristiche tecniche Technical performances					
Codice Code	Portata Max Max flow l/min - USgpm	Pressione Max Max pressure bar/PSI	Peso approssimativo Approx weight Kg / lb	Coppia di serraggio Tightening torque Nm / lbf ft	Cavità Cavity
<b>VMD1</b>	<b>20 (5)</b>	<b>350 (5000)</b>	<b>0,09 (0.20)</b>	<b>25-30 (19-22)</b>	<b>SAE8/2</b>